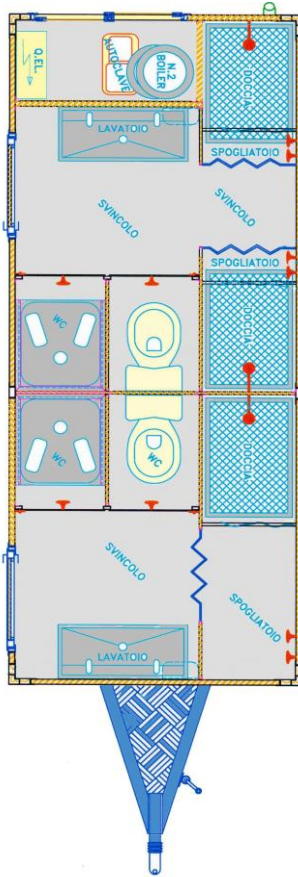


**DATA SHEET 23.C/2**



View/plan view of the unit



Interior details: entrance/exit – stall with "Turkish" toilet – stall with "standard" toilet



View of the unit's technical compartment and entrance side, set on the ground

**Single Module Mobile Bathroom Services Unit for Trailer Transport**

**MOD. CAR-SI-UD-2**

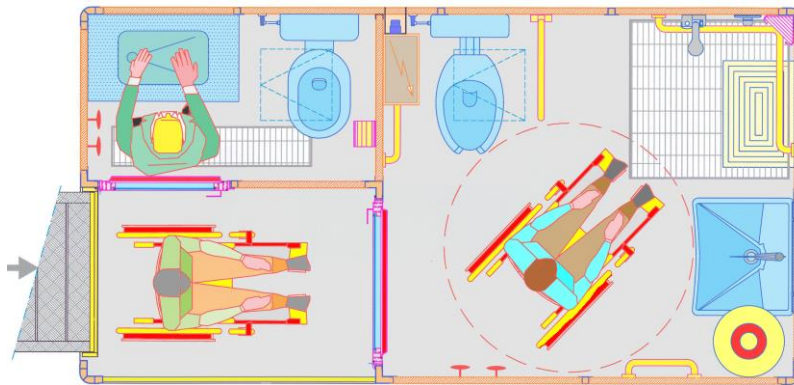
**MOD. CAR-SI-UD-43-1**

- |  |  |
|--|--|
| <ul style="list-style-type: none"> <li>a) Sturdy supporting structure with aluminium section bars obtained from press-formed L. 6082 sheets and/or extruded shaped sheets, welded at the joints to form a self-supporting, free standing unit.</li> <li>b) Transportable by a trolley/trailer with a load capacity of 25 q., or by standard vehicles with a loading platform large enough for the overall dimensions indicated below.</li> <li>c) Access platforms and steps, completely made in aluminium, detachable from the structure.</li> <li>d) Stainless steel, non-skid strips on waterproof, multi-layer wood support.</li> <li>e) Shower hob in electro-welded galvanized grid over stainless steel floor-set tubs.</li> <li>f) Insulated aluminium partitions and stratified laminated doors.</li> <li>g) External curtain walls with sandwich panels in 1/10 double aluminium sheets coated with 40mm polyurethane insulation.</li> <li>h) Aluminium door and window frames with polycarbonate "glass" and panic bars.</li> <li>i) Different entrances for men and women, and separate technical compartment with a wide aluminium door, ventilated and locked.</li> <li>j) Can be used on board a vehicle or set on the ground.</li> <li>k) Front awning and/or veranda to cover the user access area.</li> <li>l) Custom paint and finishing work for higher visibility.</li> <li>m) Nominal size of freestanding unit (in mm.): length 5000 x width 2050 x height 2300 (as for flatbed trailer).</li> <li>n) Trolley certified for standard "transportation of goods", 2 axles-hook sphere, with 2500 Kg capacity</li> </ul> | <ul style="list-style-type: none"> <li>1. Electricity from 230 V external source (or 380 V on request) on protected EEC plugs.</li> <li>2. Internal electrical control panel for external branches and distribution on various lights and sockets, with safety devices in compliance with current regulations.</li> <li>3. Technical compartment accessible from the exterior, with systems equipment and branches.</li> <li>4. Module is divided into two separate areas for men and women, equipped with: <ul style="list-style-type: none"> <li>➤ 2 men's area showers and 1 women's area shower: each constructed from a room divided into changing room and shower, complete with accessories, curtain, mirror and shelving.</li> <li>➤ 2 WCs for each of the two areas: free-standing stalls with a ceramic English bowl and a stainless steel Turkish toilet, complete with standard accessories.</li> <li>➤ 1 vestibule for each area, necessary to access the aforementioned stalls, each with a stainless steel washbasin, with 2 faucets, stainless steel mirror, shelving, fan heater, electric hand dryer and standard accessories.</li> </ul> </li> <li>5. Plumbing system with surge tank pump and/or connection to an external network + channel drain system; all with quick connections and flexible tubing.</li> <li>6. 1 150 litre electric boiler for hot water to showers and sinks, also for outside use.</li> <li>7. 1 + 1 electric ceiling fan (porthole type) with double effect (In/Out) and speed control.</li> <li>8. Grounding system with connection and rods.</li> <li>9. Set-up time for "ready state": approx. 30 minutes with trained staff.</li> <li>10. Pipes, tanks, sewage release pump (on request), connection accessories for outdoor outlets and drains.</li> </ul> |
|--|--|

**Prices:**

- 1. Mod. Car-SI-UD-2 (as described, with: 3 showers + 4 WCs + 2 washbasins): .. **€uro/each** \_\_\_\_\_ + V.A.T.-
  - 2. Mod. Car-SI-UD-43-1 (as described, with: 3 + 4 WCs + 2 washbasins): ..... **€uro/each** \_\_\_\_\_ + V.A.T.-
- Includes trailer transport systems as above

**DATA SHEET 23.C/4**



View/plan view of the unit



View of module in load/unload mode from the tilt-bed trailer



Details of the special cabin for the diversely able



External view of the access platform/ramp

**Mobile Toilet Unit for the diversely able transportable on tilt-bed trailer**

**MOD. MB4/2WCD-PR-1N+1H/A**

- |  |   |
|--|---|
| <p>a) Sturdy supporting structure with aluminium section bars obtained from press-formed L. 6082 sheets and/or extruded shaped sheets, welded at the joints to form a self-supporting, free standing unit.</p> <p>b) Transportable by a trolley/trailer with a load capacity of 20-25 q, or by standard vehicles with a loading platform large enough for the overall dimensions indicated below.</p> <p>c) Access platform, completely in aluminium, integrated in the structure.</p> <p>d) Stainless steel, non-skid floor on waterproof, multi-layer wood support.</p> <p>e) Shower hob in electro-welded galvanized grid over stainless steel floor-set tubs.</p> <p>f) Insulated aluminium and stratified laminated partitions</p> <p>g) External curtain walls with sandwich panels in 1/10 double aluminium sheets coated with 40mm polyurethane insulation.</p> <p>h) Aluminium door and window frames with polycarbonate "glass" and panic bars.</p> <p>i) Single entrance (rear side) on the area for the users of the two cabins; inbuilt technical compartment with access from outside on removable panel.</p> <p>j) transport wheels can be applied (also for winching on tilt-bed trailer) or lifting with crane from prearranged points.</p> <p>k) Custom paint and finishing work for higher visibility.</p> <p>l) Nominal size of freestanding unit (in mm.): length 4050 x width 2100 x height 2300 (as for flatbed trailer).</p> <p>m) trolley/trailer (if required) approved for standard "transportation of goods", 2 axes and ball hitch, with 2000+2500 kg capacity with tilting platform and pull/release winch</p> | <p>1. Electricity from 220 V external source (or 380 V on request) on protected EEC plugs.</p> <p>2. Internal electrical control panel for external branches and distribution on various lights and sockets, with safety devices in compliance with current regulations.</p> <p>3. Technical compartment accessible from the exterior, with systems equipment and branches.</p> <p>4. Module equipment includes:</p> <ul style="list-style-type: none"> <li>➤ 1 special cabin especially for the diversely able, therefore equipped with shower seat and grab bars, special shaped toilet bowl seat, special shaped washbasin, large mirror, various shelves, alarm button with external viewer, specific handles</li> <li>➤ 1 standard stall with English bowl, washbasin, mirror and accessories; under the washbasin, sewage release pump and heat transfer services with access from outside.</li> <li>➤ 1 vestibule/entrance, required to access to two aforementioned stalls, open to the outside, protected by parapet and folding platform/ramp, complete with removable footboard for wheelchair safety.</li> </ul> <p>5. Plumbing equipment with connection to outside network + discharge channelled in tank equipped with sewage release pump; all with quick fasteners and flexible piping provided.</p> <p>6. 1 50 l electric boiler for hot water to showers and sinks.</p> <p>7. 2 electric ceiling fans (porthole-type) with double effect (In/Out) and speed control.</p> <p>8. Grounding system with connection and rods.</p> <p>9. Set-up time for "ready state": approx. 30 minutes with trained staff.</p> <p>10. Pipes, tanks (on request) and external connection accessories for branches and drains.</p> <p>11. Removable wheel kit for ground transport and/or load/unload on/from tilt-bed trailer.</p> |
|--|---|

**Prices:**

1. **Mod. MB4/2WCD-PR-1n+1h/A** (as described with: 1 spec. stall + 1 standard stall): ....**€uro** \_\_\_\_\_ **+ V.A.T.-**
2. **Suitable trailer with tilt-bed and winch:** ..... **€uro** \_\_\_\_\_ **+ V.A.T.-**

