

DATA SHEET 19/C



Back view (closed) on winch feet



View of the unit (open) with open sides



View of the unit end in operating mode with additional veranda



View of the unit in operating mode with closed side tarpaulins

Mobile Laboratory Workshop Container Unit

Mod. C20-L/OM-P1

- | | |
|---|---|
| a) sturdy supporting structure with galvanized steel bars. | 1. electrical power supply from 380 V external network. |
| b) interior divided between equipped laboratory and technical compartment. | 2. 13 KVA – 220 V – 50 Hz soundproof generator. |
| c) hinged side walls open to double the volume. | 3. 50 l soundproof air compressor. |
| d) anti-skid aluminium floor on waterproof, multi-layer wood. | 4. 2000 x 700 x 800 h workbench with tool drawer unit. |
| e) side curtain walls in fabric-covered flame-retardant PVC. | 5. 2500 x 650 x 900 h workbench equipped with grip and drawers. |
| f) aluminium entry door with panic bar. | 6. 3000 x 550 x 750 h tool machine support table with box. |
| g) roof windows, some fixed shut and some that can be opened and closed. | 7. compressed air washing bench. |
| h) ideal for transport on standard platforms and vehicles and/or container ships. | 8. combined lathe/mill. |
| i) crane lifting on upper eye bolts. | 9. bench grinding machine. |
| j) self-winch with hydraulic system. | 10. 10 ton column hydraulic press. |
| k) earth leakage equipment. | 11. half column drill. |
| l) electrical system for equipment and lighting. | 12. portable electric soldering iron. |
| m) shunt and telephone line distribution system. | 13. oxy-acetylene welding kit. |
| n) compressed air distribution system with accessories. | 14. electrical panel with sockets for external operations. |
| o) first aid kit. | 15. wall panel storage for tools |
| p) interior painted white, exterior painted your choice of colour from the 'RAL' catalogue. | 16. 6kg dry chemical extinguisher on board. |
| q) size: mm. 6058 x 2438 x 2591 h. (ISO 20 Ft. -1CC-). | 17. basic equipment can be modified or supplemented. |

Prices:

- MOD. C20-L/OM-P1 (including hydraulic winching system): Euro/cad. _____ + I.V.A.-**
- Complete set of tools supplied: Euro/cad. _____ + I.V.A.-**



DATA SHEET 20/D.3



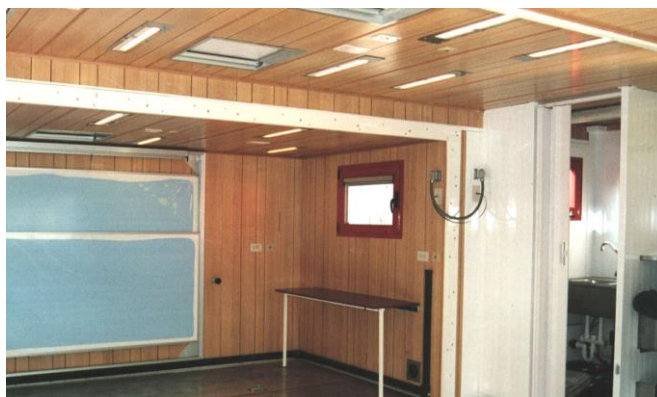
Exterior view of the unit in transport mode (therefore:) closed



View of the unit on operational entrance side (therefore: open)



Interior view from the right side of the entrance



Interior view from the left side of the entrance

Multi-Functional Mobile Operations Centre Container Unit

MOD. CONGV-SI/1

- | | |
|--|---|
| <ol style="list-style-type: none"> ideal size for transportation on trucks with ISO 20'-1CC container platform. sturdy supporting structure with galvanized steel bars. front compartment for air conditioner and generator, + branches. wings extendable along all three dimensions on telescopic sliding rails. completely manual, simple closing and opening operations anti-skid aluminium (or linoleum) floor on waterproof, multi-layer wood. interior walls covered in laminated wood. covered entrance platform, with steps and safety bars. aluminium windows: wall windows can be opened, roof windows are fixed shut. crane lifting on ISO corner fittings. aluminium entrance door with panic bar. total dimming option exterior painted in colours available on the RAL catalogue. Sizes in mm: <ul style="list-style-type: none"> closed 6058 x 2438 x 2591 (ISO 20'-1CC standard) – open 6058 x 6774 x 2591 height total weight: approximately 5500 kg. | <ol style="list-style-type: none"> electrical power supply from 220 V external network. Internal electrical control panel for external branches and internal distribution. Phone branch panel on external multipolar socket. Completely embedded electrical system for equipment and lighting. Uninterrupted power supply with preferred lines (on request). Fixed and mobile emergency lamps. Branches and internal distribution system for various telephone lines. Stabilization and highlift jacks. Winter/summer air-conditioning with split system of approximately 12000 btu/h. 5000 W emergency generator group with diesel motor, soundproofed in compliance with regulations. 3 completely foldable 1600x1800 tables – 2 (or more) 1500 x 500 wall shelves. 16 stackable steel seats – 2 wheelchairs. 1 compartment that can be equipped as a toilet or serve for other functions. 1800 projection panel, with roller on one side. 2000 x 2000 bulletin board with vertical sliding shutters on one side. Removable curtains can divide the space into three separate areas. 2 x 6 kg dry chemical extinguishers on board. |
|--|---|

Prices:

1. MOD. CONGV-SI/1 (including basic equipment listed): Euro/each _____ + V.A.T.-



DATA SHEET 21/A



Freestanding units in ISO-compliant sizes, corners in line with the regulations and winching system



Freestanding unit with side verandas



An interior area with sinks - all stainless steel



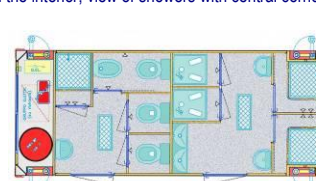
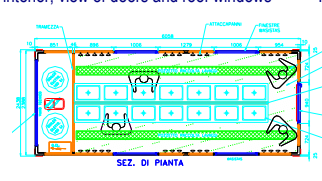
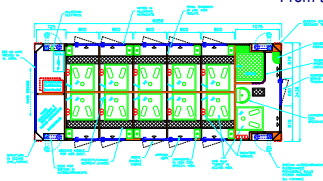
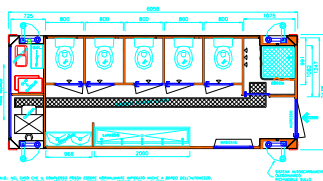
Freestanding units in ISO-compliant sizes without corner fittings



From the interior, view of doors and roof windows



From the interior, view of showers with central corridor



Freestanding Units/Containers for Various Bathroom Services in ISO 20'-1CC-compliant sizes

Mod. C20/Si.XX

These are freestanding shelters/containers with interior furnishings on request, for: showers (up to 12 stalls) or **showers + toilets (in a variable number)** or **toilets and sinks** or **single sinks**, complete with systems, including the production of hot water, using electricity only or other systems.

The stalls (always separate) can be accessed from the interior vestibule (therefore, a single entry door) or can face the access platform on the side (therefore, one exterior door for each stall).

The service junction and control boxes are found on the back of the unit, serviced by a platform, and therefore independent;

Platforms and steps are always bordered by railings for safe use.

The interior areas (including doors) are normally covered in stainless steel or laminate or pre-painted steel, and are therefore ideal to provide extremely clean conditions, better duration and mechanical resistance.

Showers always have shower hobs in steel grid over stainless steel tanks embedded in the floor (no steps necessary); a sliding door protects hooks and various shelves.

Toilet stalls can be equipped with ceramic bowls ("English" style or lowered "hospital" style) or Turkish toilets (stainless steel or ceramic), complete with the normal accessories and also shelves, etc.

Where needed, sinks (single user) or multi-user sinks are in stainless steel.

Depending on whether the unit is totally or partially equipped with showers, electrical industrial boilers are installed in the technical compartment, as well as circulation and priming pumps, etc.; the system is created with highly resistant mechanical technical materials, complete with accessories (mixer tap, faucets, fittings, etc.) of leading brands and high quality.

Electrical systems are installed by skilled technical staff and include every accessory required by law and needed for the optimal operation of the unit, such as exterior lights, emergency lights, fans, fan heaters, etc..

Equipment furnished following request and subsequent offer from us.

Prices:

1. MOD. C20/Si.XX: Various models:approximate average **€uro/each** _____ + V.A.T.-

PRICES WILL BE DEFINED IN DETAIL DEPENDING ON THE PRODUCT'S SPECIFIC FEATURES.



DATA SHEET 22



End view with technical worker entry platform



End and side view with user entrance



End and side view with user exit



View of end and two sides with protective verandas e



View of veranda with PVC flooring



Interior detail of user walkway with tubs protected by grids

Specialised Single Unit/Container for NBCR Secondary Decontamination

MOD. CON-POLI-V03

This free-standing unit/container is equipped with special systems, and adapted for operations in outdoor environments, for secondary decontamination of people.

In brief, the unit arrives at the defined area. It can be easily operated by selected technical staff to quickly create an internal pathway that includes the following: changing area – shower area – primary control area – clothing distribution area.

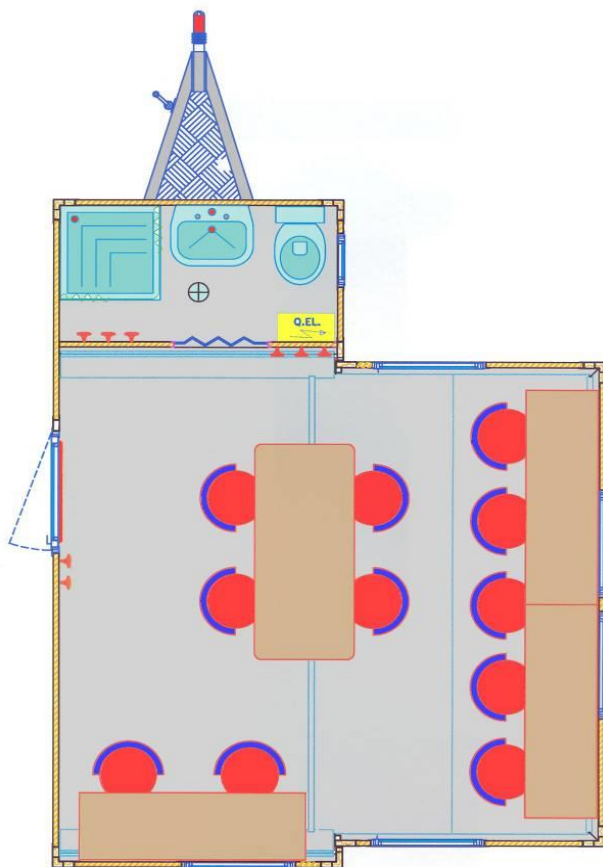
On the exterior of the unit, there are two side verandas, which can be paved, that are closed and ideal for creating waiting and/or final control areas, and can be connected to other systems (for example, tents) where more specialised services can be performed.

All the structure guarantees maximum autonomy and safety for users and operating staff

Prices:

1. MOD. CON-POLI-V03 (including systems and equipment): Euro/each _____ + V.A.T.-
2. Hydraulic winching system: Euro/each _____ + V.A.T.-

DATA SHEET 23.D/1



View/plan view of the "extended" structure in operating position



Full view of the user access area, in operating position, on trailer



Full view of the worker entrance area, in operating position, on trailer

Single Module Work Station Unit for Trailer Transport

MOD. CAR-GV-5/2

MOD. CAR-GV-5/2.L

- Sturdy supporting structure with aluminium section bars obtained from press-formed L. 6082 sheets and/or extruded shaped sheets, welded at the joints to form a self-supporting, free standing unit.
- Transportable by a trailer with a load capacity of 25 or 30 q (depending on the model) or by standard vehicles with a loading platform large enough for the overall dimensions indicated below.
- Platforms and steps for access, detachable from the structure.
- High quality vinyl or aluminium floor on waterproof, multi-layer wood support.
- External curtain walls with sandwich panels in 1/10 double aluminium sheets coated with 40mm polyurethane insulation.
- Aluminium door and window frames with polycarbonate glazing (or safety glass) and panic bar.
- Separate worker entrance, side windows under the awning for customer contact.
- Can be used on board a vehicle or set on the ground.
- Custom paint and finishing work for higher visibility.
- Nominal size of freestanding unit (in mm.): length 5000 x width 2035 x height 2300 (as for flatbed trailer) or 5000 x 2400 x 2300 for the "L" version.
- Trolley/trailer approved for standard "transportation of goods", 2 axles and ball hitch, with 2500 kg capacity.
- Mod. Car-GV-5/2.L is 2400 mm wide and has a capacity of 3000 Kg.

- Electric supply from 220 V external network on external EEC socket, provided with cable.
- Internal electrical control panel for branches with safety devices in compliance with current regulations and distribution on perimeter lights and sockets.
- The unit is divided into two distinct areas for:
 - 1 bathroom area with: toilet (caravan-type, chemical), shower hob and washbasin, complete with standard accessories.
 - 1 work area complete with: 3 foldable wall work stations; 1 freestanding folding table, 10 stackable chairs, racks, panels / boards, fire extinguisher.
- Plumbing system with connection to the external network and channel drain system.
- 1 15 litre electric boiler for shower and washbasin.
- 1 electric ceiling fan (porthole type) with double effect (In/Out) and speed control and 1 1500 W fan heater.
- 1 winter/summer air conditioning unit for the work area.
- Grounding system with connection and rods.
- Set-up time for "ready state": Approx. 15 min., with 2 people trained in advance (in a test).
- Drain tubing with quick exterior connections.
- Front awning covers the user access area.

Prices:

- Mod. Car-GV-5/2 (as described, complete with bathroom): **€uro/each** + V.A.T.-
- Mod. Car-GV-5/2.L (as described, complete with bathroom): **€uro/each** + V.A.T.-

Includes trailer transport system

