

**DATA SHEET 20/B**



Mounted platform (mod. Md 36) without cover



Platform complete with cover



Unit in operating position (mod. Md36) with shelter on 3 sides



Unit in operating position (mod. Md48) with shelter on 4 sides

**MODULAR PLATFORM for the Pedestrian Junction between Shelters having variable or various geometrical shapes**

**MOD. P-SGV-MD36**

**MOD. P-SGV-MD48**

- a) 1 frame (perimeter and intermediate) foldable along pivots and block dowels, to make the load-bearing grid, including rapid connections for adjustable feet and bushes for mobile parapets, also pre-set for slot-in crossbeams;
- b) panels in reinforced electro-welded grating (no. 15 or no. 21, depending on the model) suitable for placing on the grid made by the aforementioned frames, forming the walkway surface.
- c) removable/foldable substructure, with height adjustable feet, complete with diagonal perimeter bars detachable on dowels;
- d) detachable perimeter protection parapets on bushes, with skirting board and crossbeams;
- e) steps (no. 2 or 4) with non-slip treads, complete with detachable parapet, suitable for quick connection to the platform;
- f) 2 load bearing beams + 3 end columns and 7 trusses (divided in two elements each) complete with spacing bars and diagonals, all assembled on fast dowels and collar blocks, to be applied as pre-set in the shelters, suitable for the support of tarpaulin covers;
- g) finishing in oven-baked coating in NATO colours and style
- a) cover element in PVC coated tarpaulin (NATO type) complete with accessories for rapid assembly on the structure, connections for the shelters and a separate element for the junction with the shelters placed at the front.

**Prezzi:**

1. MOD. P-SGV-MD36: Platform kit: €/each \_\_\_\_\_ + V.A.T.- Cover kit: €/each \_\_\_\_\_ + V.A.T.-

2. MOD. P-SGV-MD48: Platform kit: €/each \_\_\_\_\_ + V.A.T.- Cover kit: €/each \_\_\_\_\_ + V.A.T.-



## DATA SHEET 20/D



Outer view of the module "closed" for transport



Rear view of entrance with the "expanded" shelter



View of the left side from the entrance



View of entrance from inside



View of the right side from the entrance

### "Variable Geometry" Command Post Shelter

#### MOD. SHPC3V.M/B

- |  |   |
|--|---|
| <ul style="list-style-type: none"> <li>a) shelter designed to serve as a "COMMAND POST", for use in the field, both for calamitous events or for military fields; usable on vehicles like the ACP 90 or similar platforms (with use of supplied ladders) on compacted soil.</li> <li>b) extreme mobility with close-sided transport vehicles and standard haulage.</li> <li>c) easy deployment with a simple manual system; easy operation for the personnel in charge and safe use for users; essential and efficient manufacture; insulation for use at temperatures from -19 to +50 °C.</li> <li>d) maximum external dimensions ("closed" and "open") in mm.: Length: closed 4000 - open 4000 (+ technical device); Width: closed 2180 - open 6040; Height: 2450; Overall weight (approx.) Kg. 3600÷3800;</li> <li>e) load-bearing structure in bars obtained by bending galvanized sheet metal 30-20-15/10 thick. The structure is equipped with upper connections for lifting via crane. In addition, 4 "jack" type brackets, required for stabilising and levelling, are an integral part of the equipment supplied.</li> <li>f) precast wall and roof panels, made of painted aluminium sheet, thickness 20/10, smooth exterior, panels in laminated plywood (wood colour) inside, with mineral wool padding of 40 mm., in compliance with UNI standards.</li> <li>g) sides made up of "elements" removable like "drawers" on double-padded telescopic load-bearing rails, with 2 windows on each of the two elements, panelled with safety glass. The shelter rear door, made up of one leaf, complete with panic bar and return spring.</li> <li>h) floor in anti-slip aluminium ashlar on waterproof multilayer wooden panels, broken down into: fixed central body; two foldable elements for the right removable body; two foldable elements for the left removable body.</li> <li>a) painting in accordance with MotorDife specifications, in NATO IR 1522 colour, subject to pickling bath and suitable substrates. Polychrome painting on request.</li> </ul> | <ul style="list-style-type: none"> <li>1. 1 central body; 2 side bodies removable from the 1st; 1 front technical device, protruding above the vehicle's cabin, without affecting its roll over Subplane of the central body, occupied by telescopic rails for the opening of the side bodies</li> <li>2. access platform to the complex, foldable, with upper service window at the entrance, complete with gas lifting system and steps provided:</li> <li>3. 1 cable kit with connectors for lifting; 1 tie-rod kit for anchoring to the transport vehicle; 2 PVC tents for division into three separate rooms.</li> <li>4. Equipment of the unit: 3 wooden table with foldable legs; 2 wall foldable tables/shelves in wood; 18 foldable chairs in shockproof material; 1 ladder provided with parapet for access to the entry platform; 1 foldable, telescopic, camouflage-type step ladder to access the roof or other services, (on request).</li> <li>5. summer/winter air conditioning system, controllable from inside, placed on the technical device.</li> <li>6. the electrical junction (220 V) and telephone (12 lines) compartments, with the related connection cables, as well as the grounding system are located in the technical device</li> <li>7. the electrical system inside the unit makes use of "universal" type sockets, located in the cavities of the structure, including lighting, consisting of neon lights (18) with independent switches. The electrical control and equipment control panel are entirely designed and manufactured with materials complying with the regulations in force, particularly for the safety of users and overall reliability.</li> <li>8. in addition to the windows (2 x removable body) which open to/away, for each of the two removable bodies, two openings are mounted on the roof, while 2 are placed on the central body, all in polycarbonate; all glass parts are fully dimmable with blinds, each protected by a collection device and rails, all located within the same amount of space occupied by the glazing</li> <li>9. a distribution junction box is provided for the connections to telephone and electrical networks.</li> </ul> |
|--|---|

#### Prices:

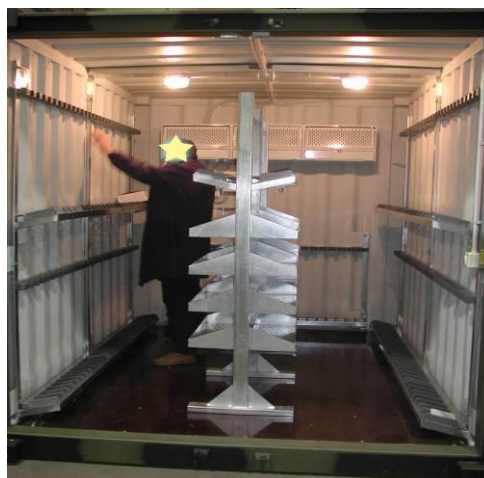
**1. MOD. ShPc3V.M/B (with standard fitting): ..... Euro/each + V.A.T.-**



## TECHNICAL SHEET 9



Front view of two superimposed units



View of the interior



Detail of racks



Detail of electrical panel (interior) and alarm box



Detail of exterior with: electrical junction, alarm switch – internal light switch and siren with flashing light

### Mobile Field Armory Container Unit

#### MOD. A/M-ISO10-140.20.30-J1

- a) **ISO-10'-compliant container unit**, with the following synthetic characteristics:
- Bearing structure in sections deriving from cold working of 2-3 mm forged sheet metal with bottom reinforced stringers
  - Waterproof 20mm wooden floor (V100), secured and sealed on the structure;
  - Forklift pockets with a 950mm interaxis
  - Panels: corrugated 1,5 sheets, with a 15 mm-high corrugation on the roof and 35 mm-high corrugation on the walls;
  - Doors along 'short' side with watertight gasket along the perimeter; complete with vertical arms / latch on both leaves;
  - **Size: 2991 x 2438 x 2591 – loadless weight: Kg. 955.**
- b) Manual and mechanical sanding, exterior coated with polychrome painting with materials referenced to by MotorDife and interior painted in a light shade.
- c) Electrical system including a 16 A – 220 V EEC-type socket, with distribution to an internal socket and 2 ceiling lights for 60W incandescent lamp, all in compliance with laws and regulations in force; all metal parts will be grounded with a socket on an external earth bolt.
- d) Galvanized steel and shaped PVC double racks (2+2 superimposed along the long walls and one on the wall opposite the entrance), for an overall capacity of approximately 140 guns; the racks can be adjusted to fit currently used gun models.
- e) 4 racks can be mounted to host 5 browning machine guns each;
- f) 3 boxes can be mounted (above the back rack) to host 10 long-barrelled guns and an accessory compartment each.
- g) Application of an electronic alarm system, including a backup battery, connections and a sight and sound external alarm unit; this system will be comprised of internal junction box – external sight and sound alarm – control accessories – connections to door contact sensors -
- h) Application of 2 internal control peepholes
- **Prices: Euro/each + V.A.T.-**